

## AnalyzeIT Enterprise Edition

*Managing storage requirements can be a challenge, with users requesting more storage space and IT managers trying to optimize the return on investment. AnalyzeIT will show you exactly what is on your file systems, identify any problems or hotspots, calculate the cost of any group of files stored on different storage technologies, and help you make informed decisions.*

Perpetual Data Ltd. (PDL) specializes in storage analysis and file migration tools for the benefit of IT managers, integrators and VARs.

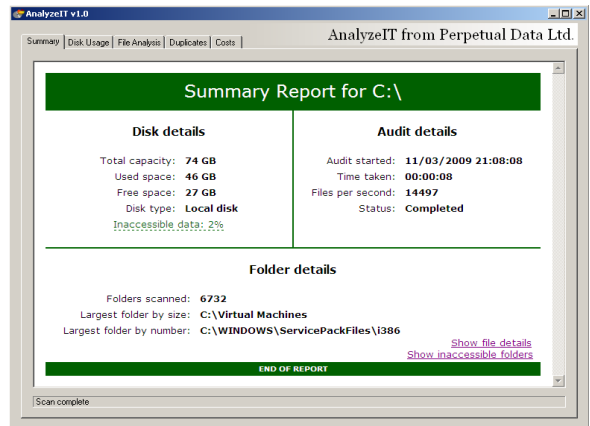
### AnalyzeIT- EP

AnalyzeIT-EP is a new tool that will scan any file system and analyze its content, presenting the results in easy to follow graphs. It can identify duplicate files, allowing you to make significant cost savings by

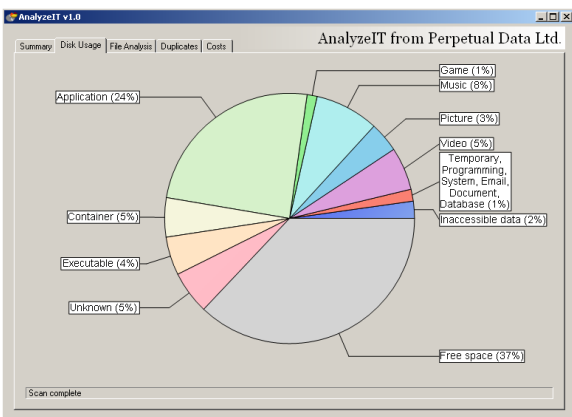
deleting redundant data that you would otherwise be unaware of. It also includes a storage cost calculator, so that you can ascertain the yearly storage cost.

### Non-intrusive

AnalyzeIT-EP can scan a local hard disk or a network share, allowing you to apply it to any storage system on your network without requiring installation on the host itself.



AnalyzeIT-EP – Scan summary report



AnalyzeIT-EP – Disk Usage overview

### Comprehensive

During the initial scan, AnalyzeIT-EP records all the details of your files, allowing subsequent analysis by any combination of file type, size, age, usage, changes, owner or attributes. Information can be viewed at varying levels of detail starting with a summary report and disk usage chart, then analysis bar charts and finally a folder and file listing. The user can seamlessly navigate between these levels.

### Easy to use

You can build up any query by simply clicking and selecting chart data points or ranges. Alternatively, a powerful natural text query mechanism allows you to apply filters in plain English, for example - “Document files accessed more than 2 years ago”, or “All files greater than 20MB and with temporary attributes”. The results are then immediately available in graph and list form.

### Interactive

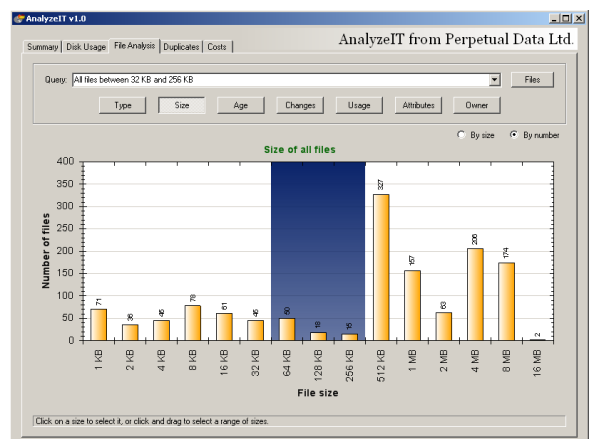
A unique feature of AnalyzeIT-EP is the real-time query capability using statistical charts. The query execution is instant and any result can be viewed in size or “number of files” metrics against any file attribute (e.g. type, size modify date etc).

### Duplicate detection

A highly optimized duplicate scan will find any of your files that are duplicates, allowing you to quickly identify the scale of duplication and the associated cost.

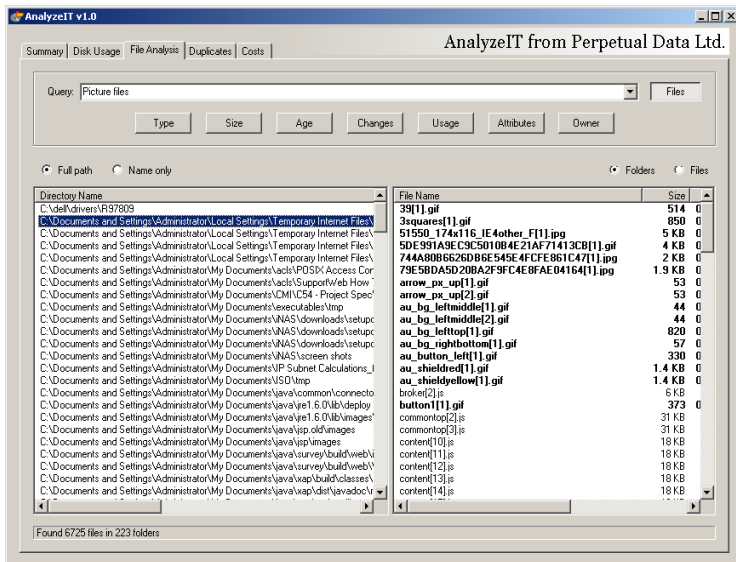
### Cost analysis

Transfer any query from the analysis views to a costs calculator, where you can calculate the cost of keeping data sets on primary storage, secondary storage, or in backups and archives. Define which storage types are applicable to you, including the number of copies of each data set and the estimated retention time. A single click then provides the information you need to determine your organization's cost of storage for any given data set.



AnalyzeIT-EP – sample size graph

## AnalyzeIT Enterprise Edition



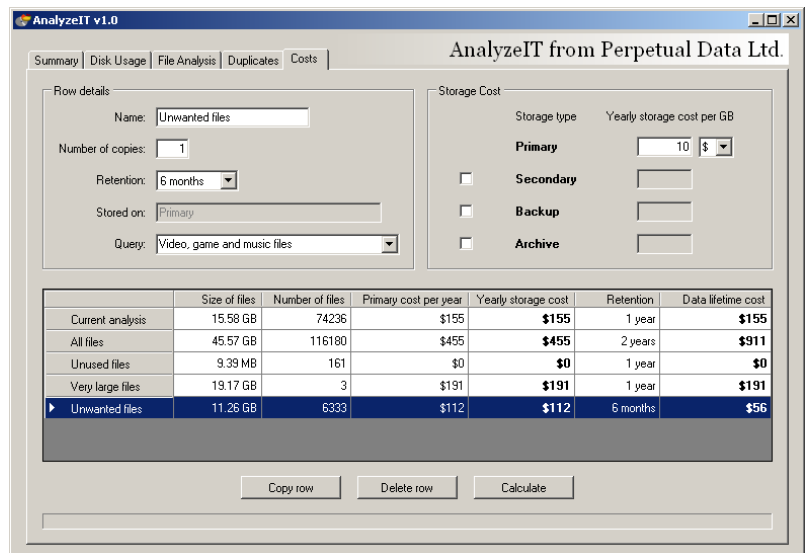
AnalyzeIT-EP - File listing by containing folder

### Key Features

- **Comprehensive** – complete analysis of file system meta data with a single scan.
- **Responsive** – switch instantly between different analysis views and get any statistics you require.
- **Informative** – analyze any subset of a file system, find duplicate files and calculate storage costs.
- **Powerful** – construct complex queries in plain English or through mouse clicks.
- **Portable** – scan any network file system from a Windows™ workstation.
- **Easy to use** – Windows™ graphical interface and easy to understand queries and summary reports.

### System Requirements

- Microsoft Windows™ XP/2003/Vista
- 25 MB free hard disk space
- 800 x 600 screen resolution
- 512 MB RAM



AnalyzeIT-EP – Storage Cost Calculator

**Perpetual Data Ltd.**  
2 West Brook, Hilton,  
Cambridgeshire. PE28 9NW.

Phone: +44-(0)7714-256782  
info@perpetual-data.com

Product names mentioned herein may be trademarks and/or registered trademarks of their respective companies.  
© Copyright 2009 by Perpetual Data Ltd. All rights reserved.  
Perpetual Data Ltd. is a company registered in the United Kingdom