

## FMS-DX

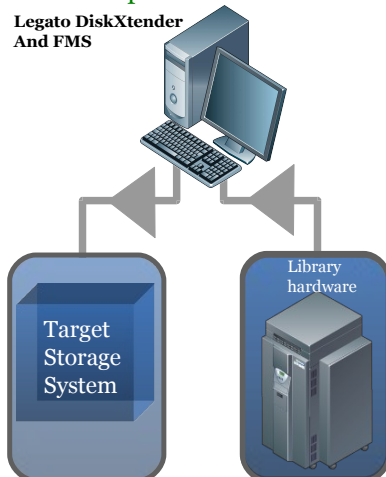
File Migration Suite  
for EMC DiskXtender™

**Migrating data to new, upgraded or different storage technology is an integral, but often difficult, part of an ILM strategy. The Perpetual Data File Migration Suite offers efficient and reliable migration of data assets from EMC DiskXtender™ based storage to any another storage solution.**

Perpetual Data Ltd. (PDL) specializes in storage analysis and file migration tools for the benefit of IT managers, integrators and VARs. The File Migration Suite (FMS) comprises of three tools – "AnalyzeIT", "MigrateIT" and "VerifyIT". The suite enables the user to reliably audit their file storage and efficiently migrate unstructured data from EMC DiskXtender™ to any UNC supporting the Windows™ NT file system semantics.

Migrating a large number of files to a storage system can be complex and time consuming; this is particularly true for solutions involving removable media technology like MO, UDO or tape. The PDL migration suite gives control to the IT manager by deploying a three phase approach: Analysis, migration and verification. This eliminates file loss, makes the migration process transparent and minimizes the time to completion.

Legato DiskXtender  
And FMS



### Non-intrusive

Before embarking on file migration the IT manager can audit the file system using the "AnalyzeIT" tool. It is a simple to use tool that fully audits the media/file inventory and highlights any potential issues in an informative report. "AnalyzeIT" is an essential tool for preparing the migration process as it takes into consideration the underlying technology (i.e. MO or UDO) and system internal information.

### Efficient Migration

Once "AnalyzeIT" has identified and sorted the migration candidates, "MigrateIT" will perform the actual file migration. In the case of removable media, the migration will be performed by sequentially reading files from media, avoiding time-consuming media swaps and optimizing the read performance of the drive. This technique is of paramount importance to the successful migration.

### Continuous Data Access

During the migration itself, access to file system for users and applications remains uninterrupted. The FMS suite does not interfere with normal business operation, so migrating data is not limited to after business hours, but can be performed as a continuous operation, and therefore reduces the duration of the migration process.

### Manage Off-line media

During migration "MigrateIT" prioritizes all on-line media. Once

all on-line files have successfully been migrated, the migration tool notifies the operator to return off-line media to the library before continuing the migration process.

### Ease-of-use

"AnalyzeIT" and "MigrateIT" are completely automated; only the selection of the data source and target is required for the migration.

### Automated resumption

The migration process is resilient against hardware failure, system shut-down and network outage. If the process is interrupted for any of the above reasons it will automatically resume when the service is available again, ensuring that files are not missed.

### Folder re-mapping

Migrating files to a new technology provides an opportunity to re-organize the folder hierarchy. "MigrateIT" offers the option of moving folders and their sub-folders within the file system hierarchy.

### Verification

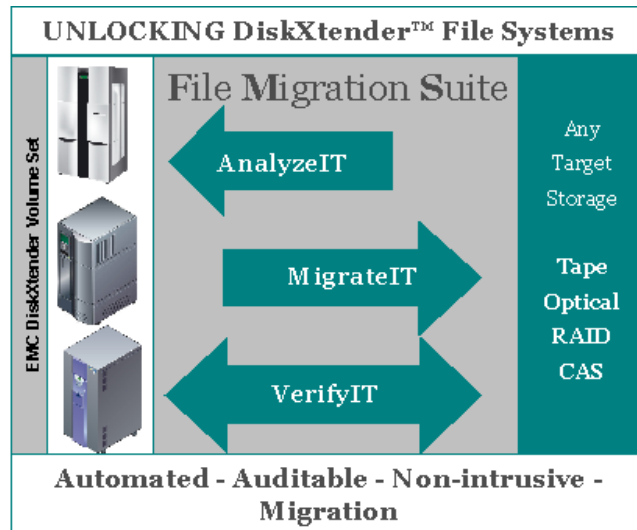
The user can verify the success of the migration process with a separate verification tool, without having to review diagnostics or log files. This task is performed by "VerifyIT".

### Reporting

All File Migration Suite tools generate reports, provide the operator with a clear status and highlight any issues that may need attention.

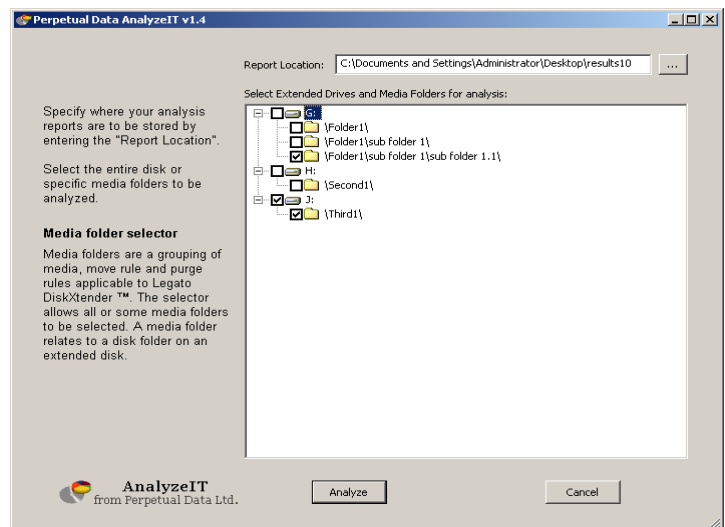
# FMS

File Migration Suite  
for EMC DiskXtender™



## Key Features

- **Reliable** - file system and media consistency check.
- **High performance** - analyze media and file information to calculate optimal migration order to significantly read speed and minimize media swaps.
- **Informative** – provide migration time estimation and planning information.
- **Resilience** - automatic resumption of migration process if interrupted.
- **Easy-to-use** – Windows™ graphical interface and easy to understand summary reports.



AnalyzeIT - Media Folder selection screen

## System requirements

- Microsoft Windows™ 2003/XP
- EMC DiskXtender™ Version 5.6+
- 100MB free disk space

## Perpetual Data Ltd.

2 West Brook  
Hilton  
Cambridgeshire, PE28 9NW  
Phone: +44-(0)7714-256782  
info@perpetual-data.com

Product names mentioned herein may be trademarks and/or registered trademarks of their respective companies.  
© Copyright 2009 by Perpetual Data Ltd. All rights reserved.  
Perpetual Data Ltd. is a company registered in the United Kingdom

www.perpetual-data.com (under construction)